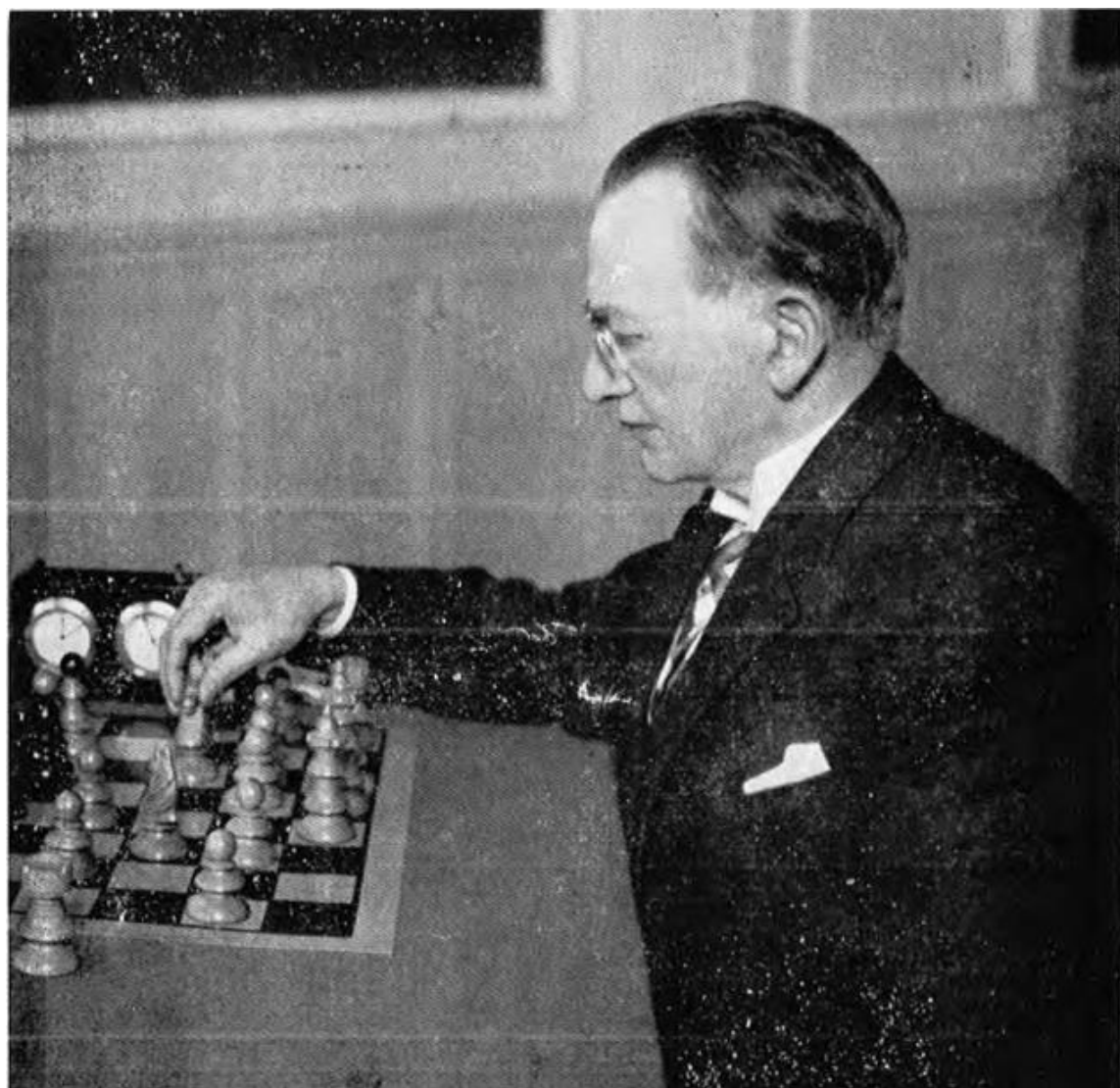


# Cultural Transfer and Chess Design on the European Borderlands

---

July 7, 2023



## TITO PLAYS LAGUARDIA



Marshall Tito (R.) plays Mr. Laguardia, Director-General of UNRRA, before a crowd of spectators in Yugo-Slavia. The game was drawn as there was not time to finish it. On the extreme left is Tito's son, Zharko.



Beyond Material

**Limited mobility and lag in development** – the value of pieces declines because they simply cannot move. The primary reason for this is usually a lag in development, although it can also be the result of your opponent's superior piece placement that does not allow you to put your pieces on their optimal squares. Let us look at several instructive examples where strong players sacrificed material to exploit the poor mobility of their opponent's pieces.

Game 26  
**Garry Kasparov**  
**Nigel Short**  
 Amsterdam 1994 (2)



2805  
 2655  
 This pawn sacrifice is the real pawn behind White's previous play.  
 18... ♖f6+  
 18... ♖xf5? loses material by force: 19. ♚f3 ♖g4 20. ♚xf8+ ♚xf8  
 21. ♚b6+  
 19. ♚b1 ♚xf5?  
 Black takes a pawn, but his development will suffer greatly. White's queen on d6 completely paralyzes his pieces. His last chance



20... ♚f3 21. ♚f3 ♖f6 22. ♚h3 ♚f7  
 Short is preparing to trade the powerful white queen with... ♖f6. He cannot untangle with 22... ♚f8 because of 23. ♚b6 ♖xf3 24. ♚f1+.



Another pawn sacrifice to keep Black's pieces in lockdown.  
 23... ♚xc4?  
 It seems like Short was intent on taking everything that his opponent offered him in this game. But this just makes it easier for White to develop his initiative. 23... ♖e7 would not work as intended, due to 24. ♖c6 ♚b8 25. cxd5 and Black's position falls

Chapter 1 – Relative value of material

26... ♚f3 27. ♚d6+ ♚g8 28. ♚a8 ♖b4 29. ♖xc4! ♚a7 29... ♚a8 30. ♖xc4+ ♚g8 31. ♚d8+ 27. ♚d6+ ♚g8 28. ♖c4! ♚g8 29. ♖a8 Virtually all of White's moves come with tempo.  
 29... ♚b7 30. ♚d6! ♚3 31. ♚xc4+ ♚xc4 32. ♚xc6 1-0

Game 27  
**Boris Gelfand**  
**Sergiy Movsesian**  
 Polonica Zolna, 2020 (5)

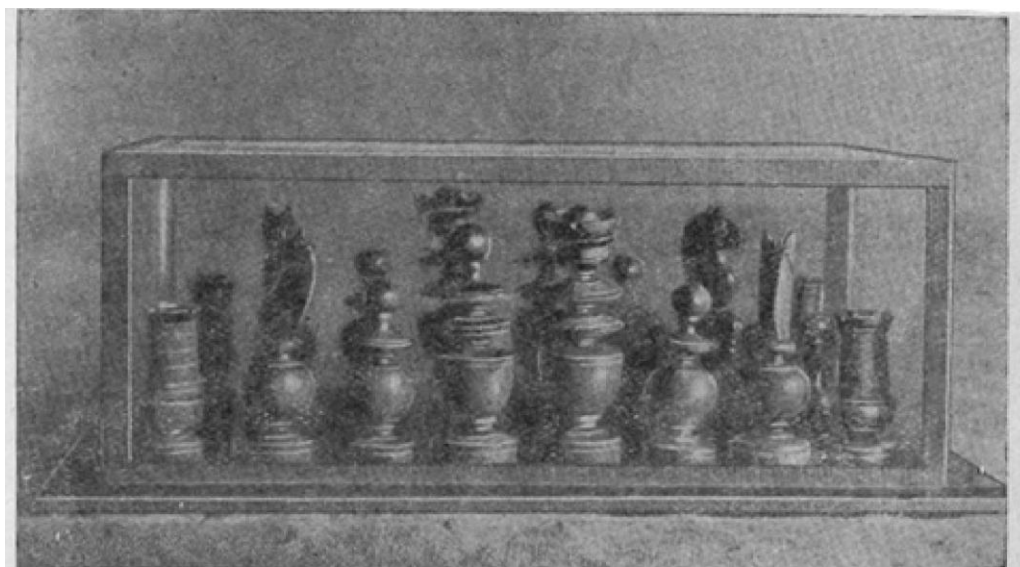


A sharp situation has arisen in the center after 11... e5. Black would like to open his dark-squared bishop and undermine the c5-pawn. However, he is one move too early.









ШАХМАТЫ Н. Г. ЧЕРНЫШЕВСКОГО  
(Музей им. Чернышевского в Саратове)







